

1. Insert the part 2,3,4,5,6,7,8 in to the blade grip (part 1) according to its order as illustrated.

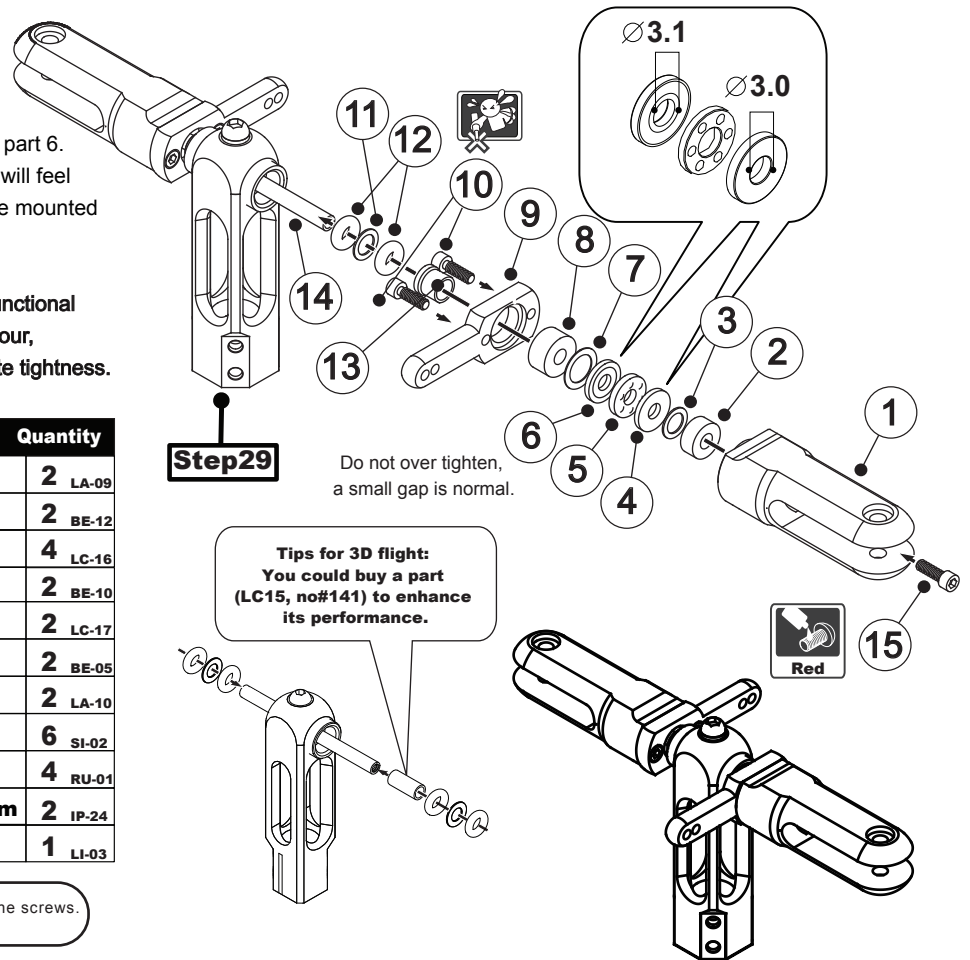
Note :

The inner diameter of part 4 is smaller than part 6.
Fit part 4 & 6 on the feathering shaft. Part 6 will feel looser & part 4 will feel tighter. Part 5 can be mounted on either sides.

Warning :

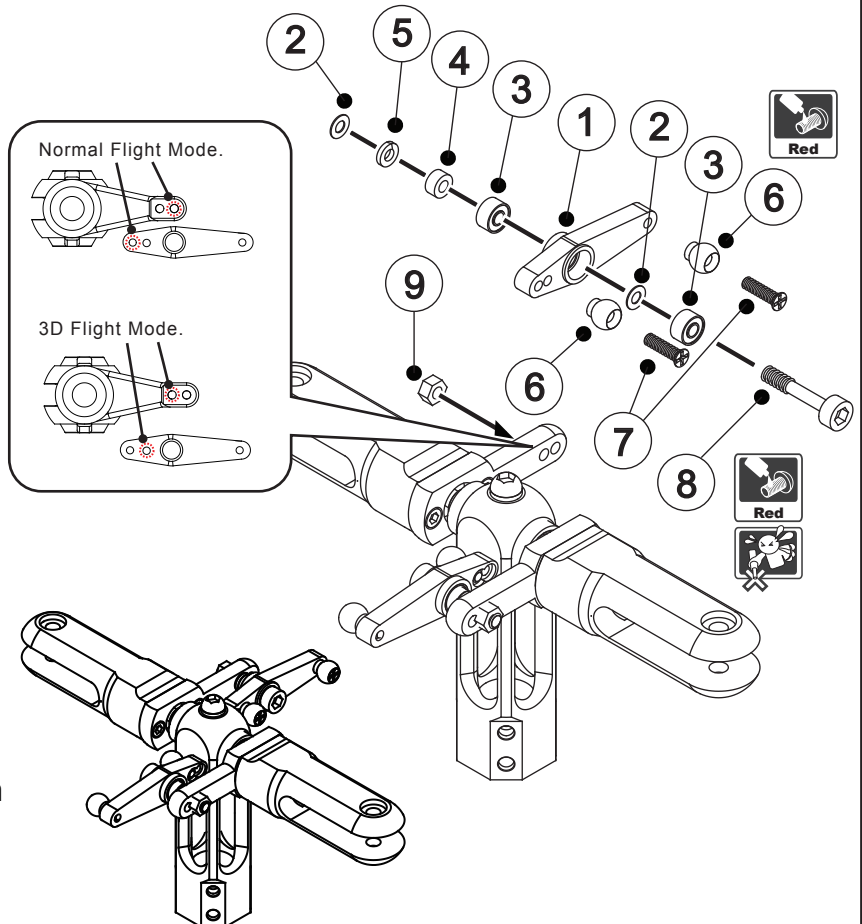
Failure to install part 4 & 6 correctly will result functional failure. When first installed, approximately one hour, O-Ring will be automatically adjusted appropriate tightness. Does not affect the flight.

Position	No./Part names	Quantity
1	Matel Main Blade Grip	2 LA-09
2	Bearing $\phi 3 \times 7 \times 3 \text{mm zz}$	2 BE-12
3.11	Washer $\phi 3.2 \times 6 \times 0.3 \text{mm}$	4 LC-16
4.5.6	Thrust Ball Bearing $\phi 3 \times 8 \times 3.5 \text{mm}$	2 BE-10
7	Washer $\phi 4.2 \times 8 \times 0.2$	2 LC-17
8	Bearing $\phi 3 \times 8 \times 4 \text{mm zz}$	2 BE-05
9	Matel Main Blade Grip Arm	2 LA-10
10.15	Socket screw M2.0x6mm	6 SI-02
12	O-Ring	4 RU-01
13	Main Rotor Bearing Tube $3 \times 5 \times 4 \text{mm}$	2 IP-24
14	Feathering Shaft	1 LI-03



Add some red thread lock. NO.T22.
 Do not over-tighten the screws.

Position	No./Part names	Quantity
1	Mixing Arm/Matel Mixing Arm	2 IP-02 LA-11
2	Washer $\phi 2 \times 3.5 \times 0.2 \text{mm}$	4 LC-06
3	Bearing $\phi 2 \times 5 \times 2.5 \text{mm zz}$ Flange Bearing (F682ZZ)	4 BE-02 BE-13
4	Washer $\phi 2 \times 3 \times 2 \text{mm}$	4 LC-05
5	Spring Washer	2 LC-18
6	Steel Ball	4 LC-11
7	Phillips Screw M2.0x9mm	4 SI-07
8	Socket Screw M2.0x13mm	2 SI-12
9	Hex Nut M2.0	2 NU-03



1. Note part 1's orientation as illustrated.
2. Do not over tighten part 6(screw), or part 1 might be stripped.
3. Add some red thread lock to part 7 when fastening it.

Add some red thread lock. NO.T22.
 Do not over-tighten the screws.